



# Up to 50% More Torque.

## Ingersoll Rand PowerSocket®

Introducing the Ingersoll Rand PowerSockets®, a revolutionary solution to bust through the most stubborn bolts. The patent-pending power ring design provides up to 50% more torque\* with your 1/2" impact wrench to get REAL WORK done. The PowerSockets® eliminate the need for additional tools, providing timesaving power and versatility to increase your productivity. Built to the same standards as our professional-grade impact sockets and backed by a limited-lifetime warranty, the PowerSockets® are built to last and work as hard as you.

### Tool Features

#### POWER

The patent-pending power ring design creates increased torque up to 50%\* on 1/2" impact wrenches to tackle the toughest jobs.

#### PRODUCTIVITY

Eliminating downtime and the need for breaker bars, cheater pipes or your buddy's 3/4" Impact. With the PowerSockets®, less work and effort are required to do the same job, so you can quickly get on to the next job.



#### VERSATILITY

The PowerSocket® fits on any 1/2" impact wrench reducing the need for additional tools to do your job.\*

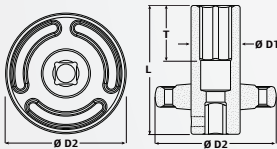
#### ACCESS

The PowerSockets® provide a compact solution to give you power in the tightest spaces, helping you access hard-to-reach spots and complete tough jobs in no time.

### AVAILABLE SIZES:



### Specs



- A** Impact-grade toughness
- B** Chrome-molybdenum steel
- C** Laser-etched size labeling

Backed by a limited lifetime warranty.

6-PT PowerSocket®						
Part Number	Output Size	Weight lb (Kg)	D1 in (mm)	D2 in (mm)	T in (mm)	L in (mm)
S64M17L-PS1	17mm	1.2 (0.56)	1.2 (30.7)	2.9 (72.6)	1.1 (28.5)	3.1 (78.0)
S64M18L-PS1	18mm	1.2 (0.56)	1.2 (31.2)	2.9 (72.6)	1.3 (33.7)	3.1 (78.0)
S64M19L-PS1	19mm	1.2 (0.55)	1.2 (31.4)	2.9 (72.6)	1.3 (34.2)	3.1 (78.0)
S64M21L-PS1	21mm	1.3 (0.58)	1.3 (34.2)	2.9 (72.6)	1.3 (32.5)	3.1 (78.0)
S64M22L-PS1	22mm	1.4 (0.64)	1.4 (35.8)	2.8 (72.1)	1.2 (30.3)	3.1 (78.0)
S64M24L-PS1	24mm	1.5 (0.67)	1.5 (38.2)	2.8 (72.1)	1.2 (30.3)	3.1 (78.0)
S64M26L-PS1	26mm	1.5 (0.69)	1.6 (39.6)	2.8 (72.1)	1.3 (33.0)	3.1 (78.0)
S64M27L-PS1	27mm	1.6 (0.71)	1.6 (41.1)	2.8 (72.1)	1.4 (36.0)	3.1 (78.0)
S64H34L-PS1	3/4"	1.3 (0.58)	1.3 (32.4)	2.9 (72.6)	1.3 (33.7)	3.1 (78.0)
S64H78L-PS1	7/8"	1.4 (0.64)	1.4 (36.1)	2.8 (72.1)	1.2 (30.3)	3.1 (78.0)
S64H1516L-PS1	15/16"	1.5 (0.67)	1.5 (38.0)	2.8 (72.1)	1.2 (30.3)	3.1 (78.0)



[irtools.com/PowerSocket](http://irtools.com/PowerSocket)  
**REAL TOOLS FOR REAL WORK.**

Ingersoll Rand (NYSE:IR) advances the quality of life by creating and sustaining comfortable and efficient environments. Our people and our family of brands — including Club Car®, Ingersoll Rand®, Thermo King® and Trane® — work together to enhance the quality and comfort of air in homes and buildings; transport and protect food and perishables; and increase industrial productivity and efficiency. We are a \$12 billion global business committed to a world of sustainable progress and enduring results.

\*Results may vary. As tested on the Ingersoll Rand 2235TiMAX, Ingersoll Rand 2135, and Ingersoll Rand W7150